

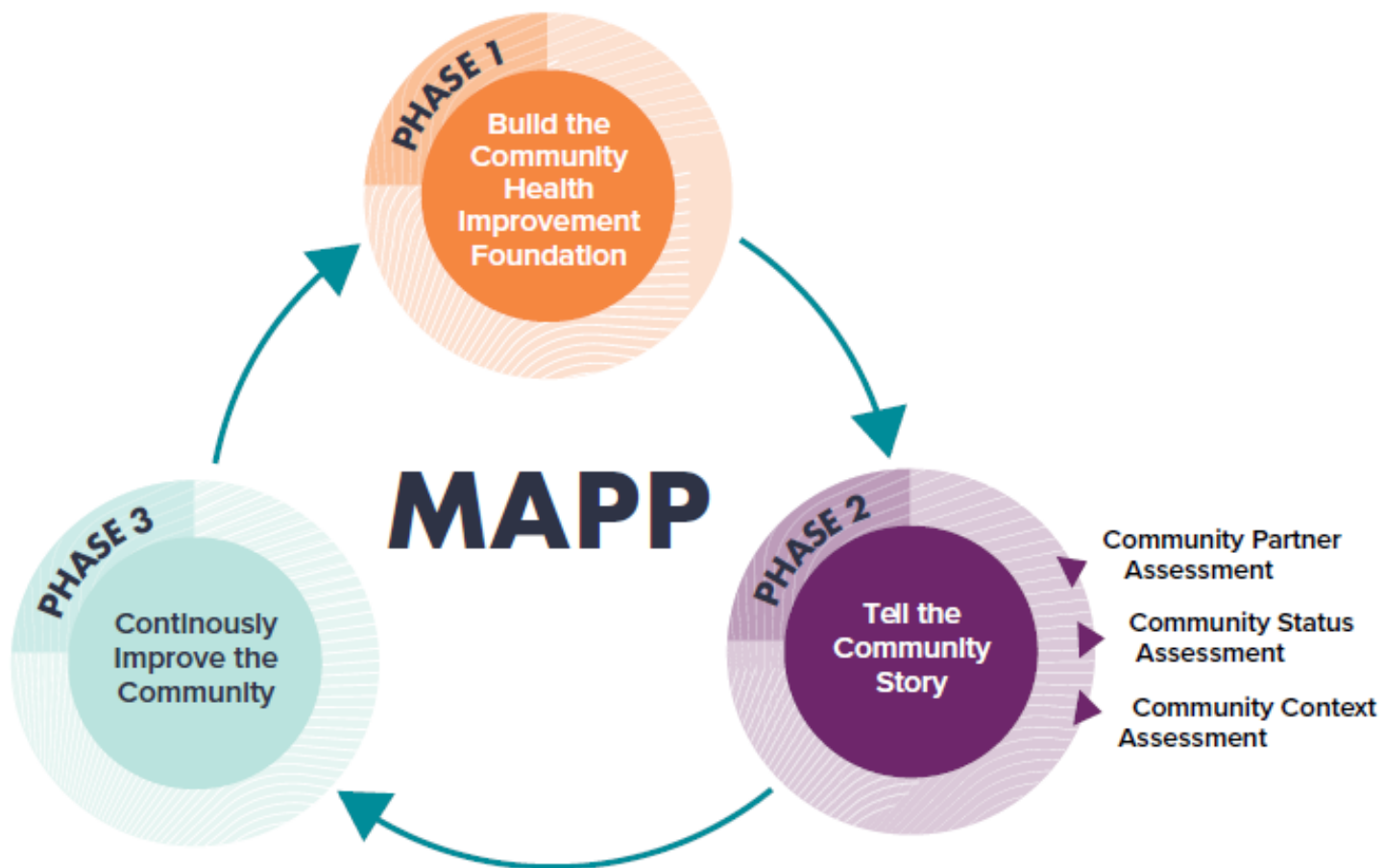


Ascendant & Island County CHA Contract

Presented at CHAB
September & October 2023

Presentation Overview

1. Debrief after CHA Kickoff Meeting with Ascendant
2. Walk through updated slides and project steps
3. Discuss next steps and action items



Phase 2: Tell the Community Story



- Ascendant Healthcare Partners to support the completion of each of the assessments to help us Tell the Community Story
- CHAB and Public Health Leadership will act as the decision makers every step of the way
- CHAT will provide feedback and supporting outreach activities to engage our community

Kickoff Meeting Debrief

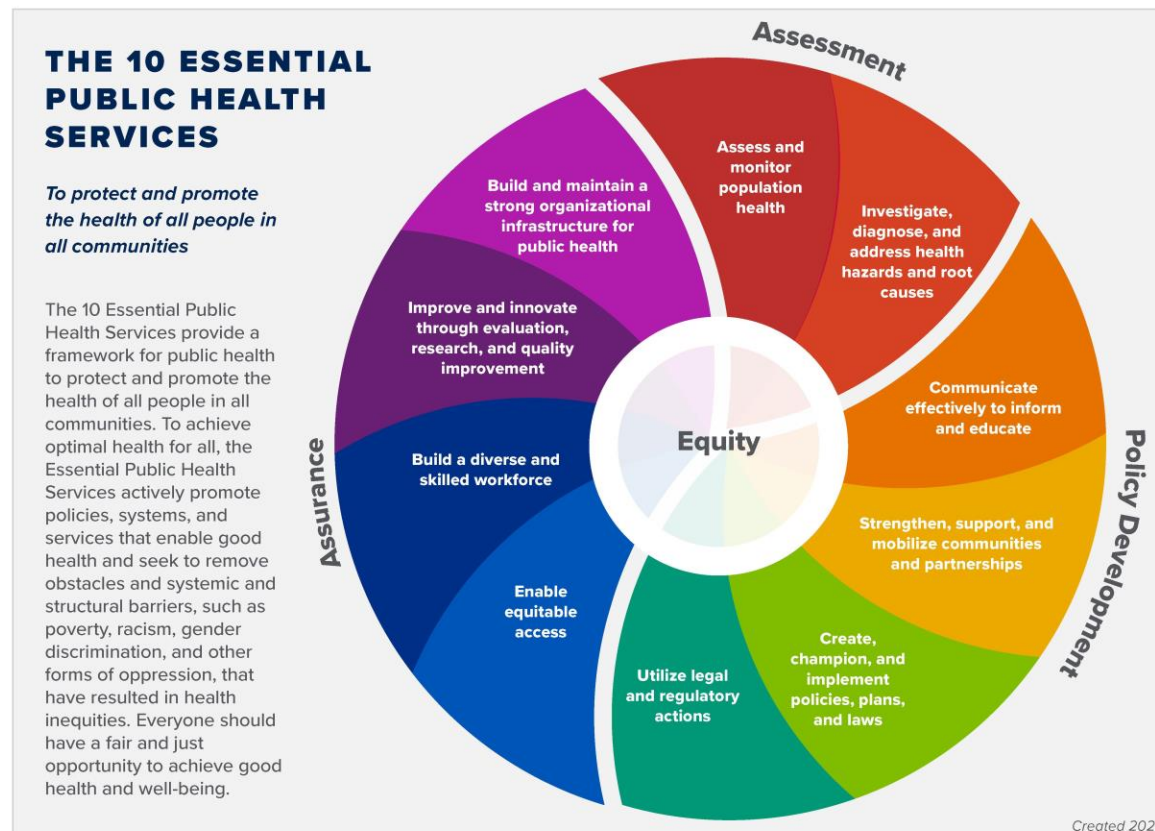
(held September 21st, 2023)

Discussion Guidance

- Overview of MAPP
- Data Analysis Review
- Next Steps

Community Partner Assessment

Partners from the county's local public health system will participate in a survey on their involvement in community health. The partners will convene to discuss the survey results as they apply to the Model Standard Activities which serve as quality indicators aligned with the 10-essential public health service areas.



Partner Assessment Updates

- Ascendant explained that the 10 prioritized partnerships should be:
 - Key partners working with the local public health department
 - Selected with the intention of being actively engaged in analysis
 - Partners we invite should hold leadership positions in their organization

We can request support/participation from more than 10 partners!

Equity

Ensuring at least two (2) community/partner members or organizations that represent populations that are disproportionately affected by conditions that contribute to health risks or poorer health outcomes to participate in the survey and attend the meeting.

Partner List Discussion

Who Should We Prioritize?

<https://padlet.com/tlawson52/community-partner-prioritization-gfmtqzyh9k9fwifd>

Think about our relationship with partners in our community. Rating them based on the strength of our relationship can help prioritize who to engage.

Equity

Ensuring at least two (2) community/partner members or organizations that represent populations that are disproportionately affected by conditions that contribute to health risks or poorer health outcomes to participate in the survey and attend the meeting.

Community Status Assessment

Informs MAPP and collects quantitative data on the status of your community such as demographics, health status, and health inequities. The CSA helps a community move “upstream” and identify inequities beyond health behaviors and outcomes, including their association with social determinants of health and systems of power, privilege, and oppression. The CSA is a community-driven assessment to help tell the community’s story.

Community Status Assessment Questions

1. What does the status of your community look like, including health, socioeconomic, environmental, and quality-of-life outcomes?
2. What populations experience inequities across health, socioeconomic, environmental, and quality-of-life outcomes?
3. How do systems influence outcomes?

Community Status Assessment Deliverables

Deliverable	Person/Team Responsible	Timeline
Identify a Health Equity Liaison	Core Team	At kickoff meeting
Provide a minimum of 50 indicators	Ascendant	
Provide a link to community-wide survey	Ascendant	
Collect at least 150 surveys	Core Team & CHAT	Within 70 days of project start date
Present and facilitate results to MAPP Core Team	Ascendant	
Provide written analysis of CSA	Ascendant	Within 30 days of survey close date

Health Indicators Updates/Discussion

Data versus Lived Experiences – Contextualizing Data

Zip Codes versus Census Tracts

Indicator Relevance – Prioritizing Data

Equity

Identify the vulnerable population(s) within the county: Under five years old, age 65 or over, disability, educational attainment (less than ninth grade), veteran population, immigrants, LGBTQ+, African American, Hispanic, Asian, Native American.

Provide supporting documentation from Washington Public Health Information Warehouse that provides details on vulnerable populations as well as any other supporting documentation requested by AHP.

Community Survey: What is Missing?

Equity

Identify the vulnerable population(s) within the county: Under five years old, age 65 or over, disability, educational attainment (less than ninth grade), veteran population, immigrants, LGBTQ+, African American, Hispanic, Asian, Native American.

Once the vulnerable population is identified, the Health Equity Liaison is responsible for the distribution and collection of 50 completed surveys (all questions must be answered to be counted as a complete survey). The Liaison will scan all surveys to AHP.

Community Context Assessment

A qualitative tool to assess and collect data. It collects the insights, expertise, and views of people and communities affected by social systems to improve the functioning and impact of those systems. The CCA moves beyond interventions that rely on perceived community needs to understand a community's strengths, assets, and culture.

Community Context Assessment Questions

- What strengths and resources does the community have that support health and well-being?
- What current and historical forces of change locally, regionally, and globally shape political, economic, and social conditions for community members?
- What physical and cultural assets are in the built environment? How do those vary by neighborhood?
- What is the community doing to improve health outcomes? What solutions has the community identified to improve community health?

Community Context Assessment Deliverables

Deliverable	Person/Team Responsible	Timeline
Forces of Change Facilitated Group Discussion	Ascendant Core Team, CHAT, and community partners attend	
Present provide facilitation of results to Core Team	Ascendant	
Provide written analysis of assessment	Ascendant	Within 30 days of group discussion completion

Forces of Change Assessment Overview

How To Identify Forces of Change

Think about forces of change — outside of your control— that affect the local public health system and/or Island County.

1. What has occurred recently that may affect our local public health system or community?
2. What may occur in the future?
3. Are there any trends occurring that will have an impact? Describe the trends.
4. What forces are occurring locally? Regionally? Nationally? Globally?
5. What characteristics of our jurisdiction or state may pose an opportunity or threat?
6. What may occur or has occurred that may pose a barrier to achieving the shared vision?

Community Context Discussion

All community is welcome to join the Context Discussion, but begin thinking about who we should engage to be most representative of our community.

- Social
- Economic
- Political
- Technological
- Environmental
- Scientific
- Legal
- Ethical

Equity

Ensuring at least two (2) community members or organizations that represent populations that are disproportionately affected by conditions that contribute to health risks or poorer health outcomes are in attendance.

Next Steps

Assessment Team	CHAB & Public Health Leadership
Finalize "elevator speech" and a one-pager that we can use to invite partners to complete the survey	Contribute to Stakeholder Prioritization discussion board
QR Code Flier for more information and opportunities to participate	Review indicators and think about “if we chose 50, what would they be?” Focus on relevancy for Island County
Begin outreach and informal information sessions to share about CHA (discuss use of CHAT time and locations)	

October

2023

Monday	Tuesday	Wednesday	Thursday	Friday	Saturday	Sunday
						1
2	3	4 Partner & Community Survey "Go Live"	5	6 Share survey outreach plan and links with CHAB/CHAT	7	8
9	10 Bi-weekly Assessment Team Check-ins (11AM- 12PM)	11	12	13	14	15
16	17	18 Share updates during BOH meeting	19	20	21 Partner Survey Closes	22 Send invitations for partner survey meeting
23	24 Bi-weekly Assessment Team Check-ins (11AM- 12PM)	25	26	27	28	29
30	31 Partner Survey Assessment Meeting w/ Partners (10AM-12PM)					

November

2023

Monday	Tuesday	Wednesday	Thursday	Friday	Saturday	Sunday
		1	2	3	4	5
		Share updates during CHAB / CHAT meetings				
6	7	8	9	10	11	12
Bi-weekly Assessment Team Check-ins (11AM-12PM)						
13	14	15	16	17	18	19
Community Survey Closes		Promote Community-Wide survey Meeting				
20	21	22	23	24	25	26
Bi-weekly Assessment Team Check-ins (11AM-12PM)						
27	28	29	30			
Community Survey Results Community - Wide meeting (9:30AM - 12PM)						

December

2023

Monday	Tuesday	Wednesday	Thursday	Friday	Saturday	Sunday
				1 Share updates during CHAB / CHAT meetings	2	3
4	5 Bi-weekly Assessment Team Check-ins (11AM- 12PM)	6	7	8	9	10
11	12	13	14	15	16	17
18	19 Bi-weekly Assessment Team Check-ins (11AM- 12PM)	20	21	22	23	24
25	26	27	28	29	30	31 Draft CHA due end of year (EOY)