



CHAT Meeting

August 4th, 2023

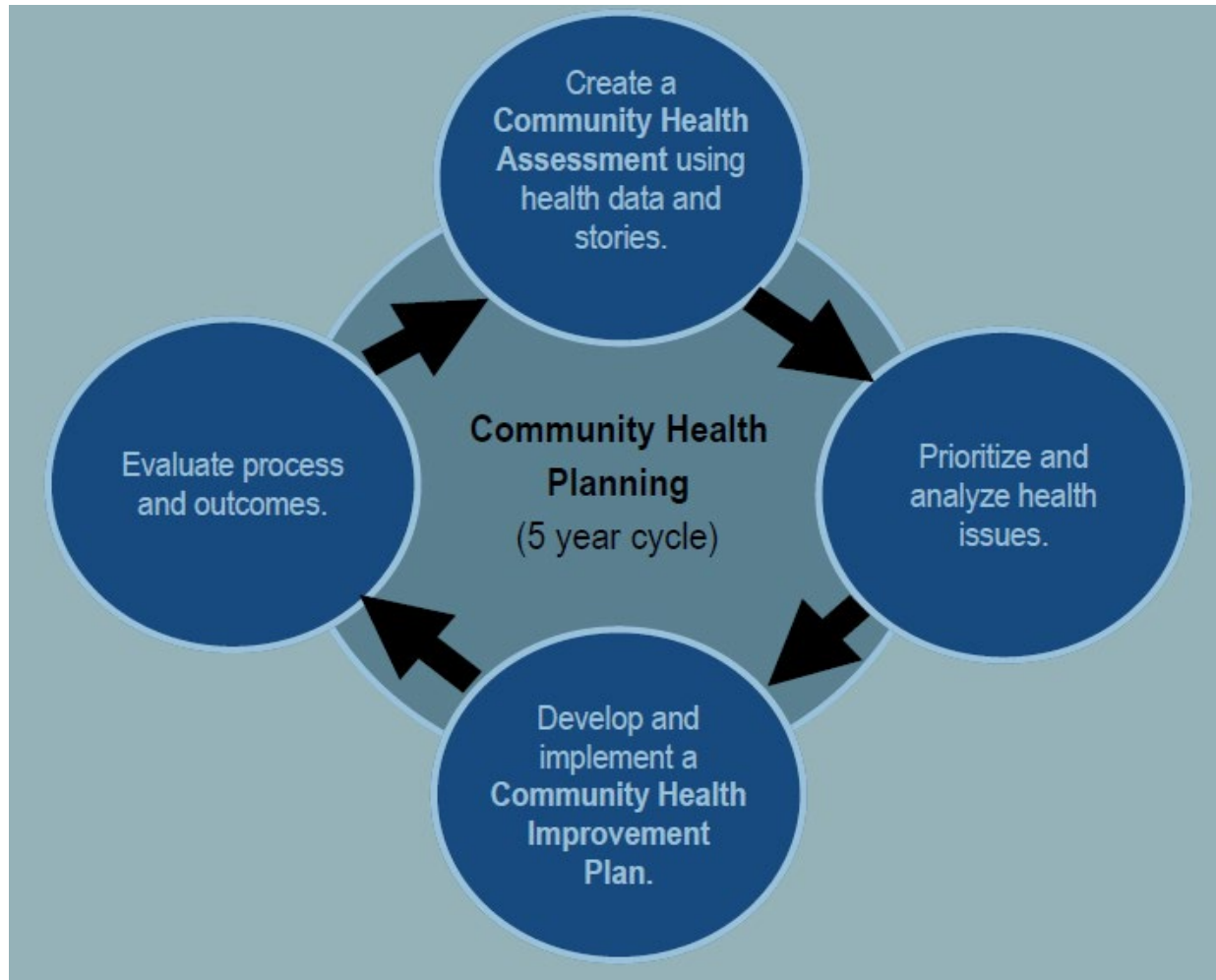
1:30PM – 2:30PM



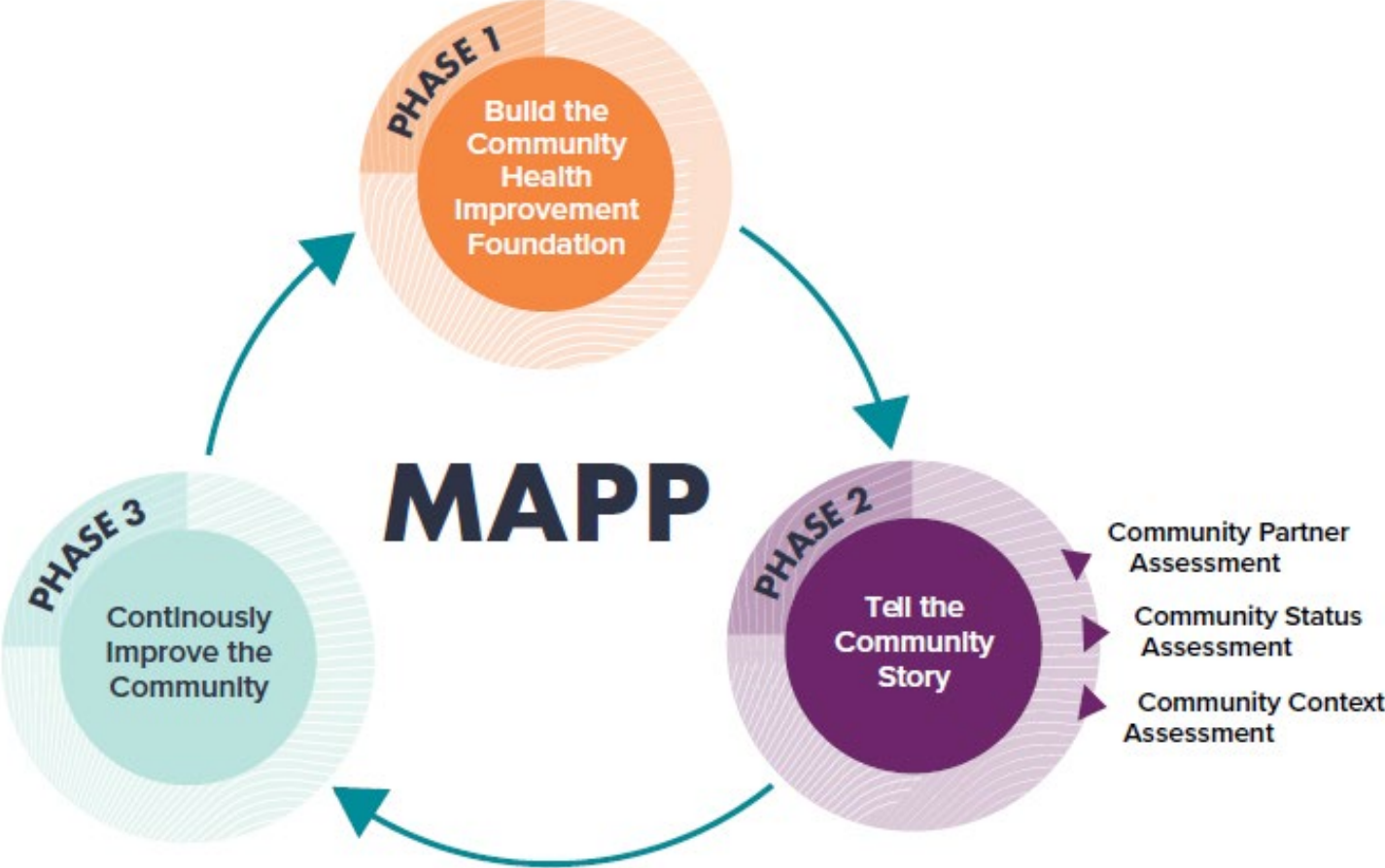
Agenda

- Sign-In & Check-In
- Revisit the Planning Process
- Timeline for Completion During Last Cycle
- 2015 Community Health Assessment Overview
- 2018 Community Health Improvement Plan (Vision 2020) Overview
- Questions & Comments

Community Health Planning



MAPP Framework: Equity & Inclusion



Timeline of Previous CHA/CHIP

2015-2016

- Completion of the CHA

2016-2018

- Development of the CHIP, informed by results from the CHA

2018-2019

- Priority Areas identified
- CHIP Workgroups were formed

2020-2022

- COVID-19 halted all CHIP implementation work

2022-Present

- Focus on reestablishing CHA/CHIP Infrastructure
- Review of what has been done and planning next steps

2015 Community Health Assessment

Indicators of Local Health

The 2015 Community Health Assessment in Island County included data from the following indicator categories.

DEMOGRAPHICS & SOCIAL ENVIRONMENT



- Age
- Race & Ethnicity
- Household Status
- Marital Status
- Income & Poverty
- Employment & Military Status
- Education
- Housing

PHYSICAL ENVIRONMENT



- Ground Water Quality
- Drinking Water Quality
- Zoonotic Disease
- Food Service Establishment Safety
- Transportation
- Parks & Open Space
- Air Quality

HEALTH CARE ACCESS & QUALITY



- Provider Availability
- Health Insurance Coverage
- Emergency Room Use
- Avoidable Hospital Readmissions

HEALTH BEHAVIORS



- Pregnancy & Birth
- Immunization & Screening
- Violence
- Substance Abuse
- Nutrition
- Physical Activity

MORBIDITY & MORTALITY



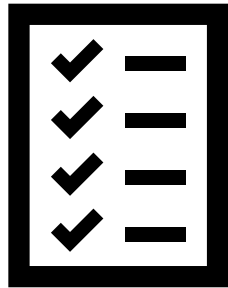
- Physical Health
- Mental Health
- Birth Outcomes
- Hospitalizations
- Chronic and Non-Communicable Disease
- Communicable Disease
- Disability
- Leading Causes of Death

2015 Community Health Assessment

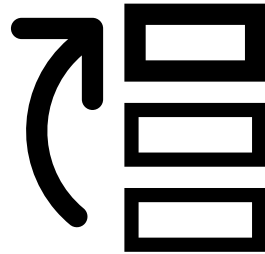
Data Collection

- 145 data points (indicators)
- Findings from a community-wide health survey (1100 people responded)
- 8 focus group discussions (with community members from specific populations identified as a population with health disparities or a population under-represented in the community-wide survey)

Community Health Prioritization



Public Health & Community
Health Advisory Board
Scoring Framework



Organizational &
Community Workshops



Facilitated Discussion
Groups

Vision 2020

2018 CHIP Overview

Figure 1

ACCESS TO CARE

Measure: Island County adults with a routine medical check-up in the past year.

Source: Behavioral Risk Factor Surveillance Survey System, Washington State Department of Health.

Baseline	Current	2020 Target
57.8% (2012-2013)	63.0% (2014-2015)	68.2% (National Average)

INTERPERSONAL ABUSE

Measure: Total number of client intakes at Citizens Against Domestic and Sexual Abuse (CADA).

Source: Citizens Against Domestic and Sexual Abuse, Client Intake Reporting, Oak Harbor, Washington.

Baseline	Current	2020 Target
224 (2013)	223 (2016)	245 (10% increase)

HOUSING

Measure: Number of individuals in Island County reporting sleeping unsheltered the night prior.

Source: Island County Point-in-Time Count, Island County Human Services Department, 2013-2017.

Baseline	Current	2020 Target
90 (2013)	154 (2017)	124 (20% decrease)

DEPRESSION AND SUICIDE

Measure: Rate of suicides (age-adjusted per 100,000) by Island County residents.

Source: Washington State Department of Health, Center for Health Statistics, Death Certificate Data, 1990-2015, Community Health Assessment Tool, August 2016.

Baseline	Current	2020 Target
23.2 (2013)	16.7 (2015)	10.2*



Access To Care

1. Promote Education & Engagement
2. Strengthen Collaboration and Coordination of Patient Care
3. Expand Availability of Health Care Services

Goal 1: Promote Education & Engagement

Objective

- By 2020, Island County residents and health care providers will have access to online and in-person support to identify available health care services in Island County.

Strategy

- Island County Public Health will a) create and staff a health care resource center and b) create and sustain an online health care resource directory.

Community Activities

- 2019 Island Community Resource Guide
- Island Senior Resources Aging & Disability Resources
- Island County Behavioral Health guide
- North Sound 2-1-1

Goal 2: Strengthen collaboration and coordination of patient care between providers and agencies

Objective

- By 2020, increase the availability of health care options in Island County through medical outreach that delivers services to individuals in the community.

Strategy

- Whidbey Health, Island County EMS, and Camano Fire and Rescue will explore feasibility of health outreach model on community paramedicine or community health workers.
- Naval Hospital Oak Harbor, Whidbey Health, and North Sound Behavioral Health Organization will increase use of telemedicine and telepsychology services and expand locations and hours.

Community Activities

- Community Paramedic program on Camano Island hosted by the Camano Fire and Rescue
- WH EMS leader Robert May has expanded trainings for first responders on how to identify and prevent unnecessary emergency department visits
- The Covid-19 pandemic and mitigation measures taken to control the pandemic required expansion and more common use of telemedicine and telepsychology services.
- Health care providers nationwide have expanded the use of telemedicine.
- Legislation enacted ensuring insurance coverage for telemedicine services

Goal 3: Expand availability of health care services, especially for those at greatest risk

Objective

- By 2020, implement and advance care planning public information and engagement campaign for Island County residents through a network of community agencies.

Strategy

- Whidbey Health and Island Senior Resources will develop and implement a campaign to promote and support (online and in-person) advance care planning for residents of all ages

Community Activities

- Honoring Choices Pacific Northwest is a joint initiative between Washington Hospital Association and Washington State Medical Foundation for Health Care Improvement that “inspires conversations about the care people want at the end of life.”
- Several leaders in senior care services organized a presentation by Honoring Choices to a group of community members in the Spring of 2019.

Discussion

What was done well?

What is missing?

What do we still need to work towards?



Affordable Housing

1. Increase Availability of Overnight Emergency Shelter and Support Services to Individuals Seeking Shelter
2. Preserve Existing And Increase Total Number Of Units Of Healthy Affordable Housing
3. Increase Availability Of Permanent, Supportive Housing Units

Goal 1: Increase Availability of Overnight Emergency Shelter and Support Services to Individuals Seeking Shelter

Objective

- By 2018, Island County will have a year-round overnight emergency shelter and reduce the number of homeless individuals reporting sleeping unsheltered the night prior by 20%.
- By 2018, homeless individuals and families will have improved referral and access to support services through the overnight emergency shelter.

Strategy

- Whidbey Homeless Coalition will create and ensure funding for an overnight emergency shelter on Whidbey Island.
- Housing Work Group will establish, communicate, and obtain the transportation resources necessary to ensure referrals to this shelter occur from the jails and emergency department.
- Island County Human Services will assess the need for an emergency shelter on Camano Island.
- Island County Public Health will offer referrals for: community and dental providers, mental health and substance use disorder treatment providers to shelter clients.
- Island County Human Services will offer housing support services through Island County Housing Support Center.

Community Activities

- Spin Café (Oak Harbor)
- The Haven (Oak Harbor)
- Ryan's House
- Marjorie's House
- Whidbey Homeless Coalition Hope House
- Opportunity Council created a directory of relevant clinical and social support services.
- Compass Health offers a range of behavioral health services. They are also helping with referrals to other treatment centers in neighboring counties.
- Embedded outreach mental health professional hired to be present with law enforcement to help resolve conflicts and direct people to available services

Goal 2: Preserve Existing And Increase Total Number Of Units Of Healthy Affordable Housing

Objective

- By 2020, increase the number of affordable and available housing units per 100 households at/or below 50% of area median income

Strategy

- Island County Human Services will advocate for maintaining current funding for affordable housing development and operation, including recommend removing recording fee sunset and preservation of the State Housing Trust Fund

Community Activities

- CARES Act and ARPA funding received to cover initial development costs for construction of additional affordable housing units.
- The county used to maintain contracts with several apartment buildings to hold prices down. These contracts are no longer in place.

Goal 3: Increase availability of permanent, supportive housing units

Objective

- By 2020, increase the number of affordable and available housing units per 100 households at/or below 50% of area median income

Strategy

- Island County Human Services will complete a cost-benefit analysis for increasing permanent supportive housing units. Island County Human Services will identify a development partner or funding resources to provide support services

Community Activities

- A developer has purchased a hotel in Freeland to create 21 new housing units.
- HB 1590 passed. This makes 1/10 of 1% on sales tax available to support housing programs.
- HB 1277 passed. This increases document recording fees to support housing programs at a State level.



Interpersonal Violence

1. Reduce The Likelihood and/or Impact Of Interpersonal Abuse
Among Residents Of Island County.

Goal 1: Reduce the likelihood and/or impact of interpersonal abuse among residents of Island County.

Objective

- Maintain Community Health
- Improvement Plan Work Group for implementation of plan initiatives on interpersonal abuse
- By 2020, Island County professionals from at least five community sectors will have enhanced skills to identify harm or risk of harm related to interpersonal abuse.
- By 2020, all persons receiving interpersonal abuse training under this initiative will be able to identify appropriate referral services.

Strategy

- Island County Public Health will 1) maintain regular meetings for work group members. The Interpersonal Abuse Work Group will also 2) identify service professionals and volunteers countywide to train to recognize and respond to abuse, 3) provide training to help individuals take appropriate next steps, and 4) collaborate with other community efforts to reduce the likelihood or impact of abuse among resident
- The Interpersonal Abuse Work Group will develop or adapt existing interpersonal abuse curriculum materials for training community champions
- The Interpersonal Abuse Work Group will identify Island County referral services available for individuals and families encountering abuse and distribute this referral material at each training.

Community Activities

- Work group convened 2018-2020
- Coalition Against Domestic and Sexual Abuse (CADA) community wide trainings on anti-bullying, healthy relationships, DV and Assault
- NAS Whidbey Island Fleet & Family Services Human Services intern developed a Train-the-Trainer abuse recognition and prevention curriculum.
- A group of clergymen and women underwent an interpersonal abuse recognition and prevention training in 2018
- CADA is the primary referral service for those experiencing domestic and sexual abuse. They also utilize Opportunity Council's Island Community Resource Guide.
- The NAS Whidbey Island Fleet and Family Services also provides referral services for those experiencing interpersonal abuse.

Discussion

What was done well?

What is missing?

What do we still need to work towards?



Suicide & Depression

1. To educate the public about the signs and symptoms of depression and suicide and inform them about the resources available for those at risk

Goal 1: To educate the public about the signs and symptoms of depression and suicide and inform them about the resources available for those at risk

Objective

- Explore creating a community coalition to develop how to implement strategies

Strategy

- Use the “access to care navigation system” to explore the resources that address depression and suicide
- Educate the public about the signs and symptoms of depression and suicide using existing media and new information sources
- Address the community’s interests and needs to ensure this educational information and awareness activities meet these needs.

Community Activities

- Youth SOAR: A committee has been established that includes representatives from Big Brothers, Big Sisters and local pediatricians
- Ongoing mental health first aide trainings offered to providers and community partners.
- The Commissioners proclaimed support for May Mental Health Awareness and September Suicide Prevention months.
- Online social media campaigns were created and posted during Mental Health Awareness Month (May) and Suicide Awareness Month (September)
- Organized two awareness campaign events via Sno-Isle Library
- Safer Homes, Suicide Aware (Safer Homes, Suicide Aware (saferhomescoalition.org)) is a training program created by the Safer Homes Coalition.

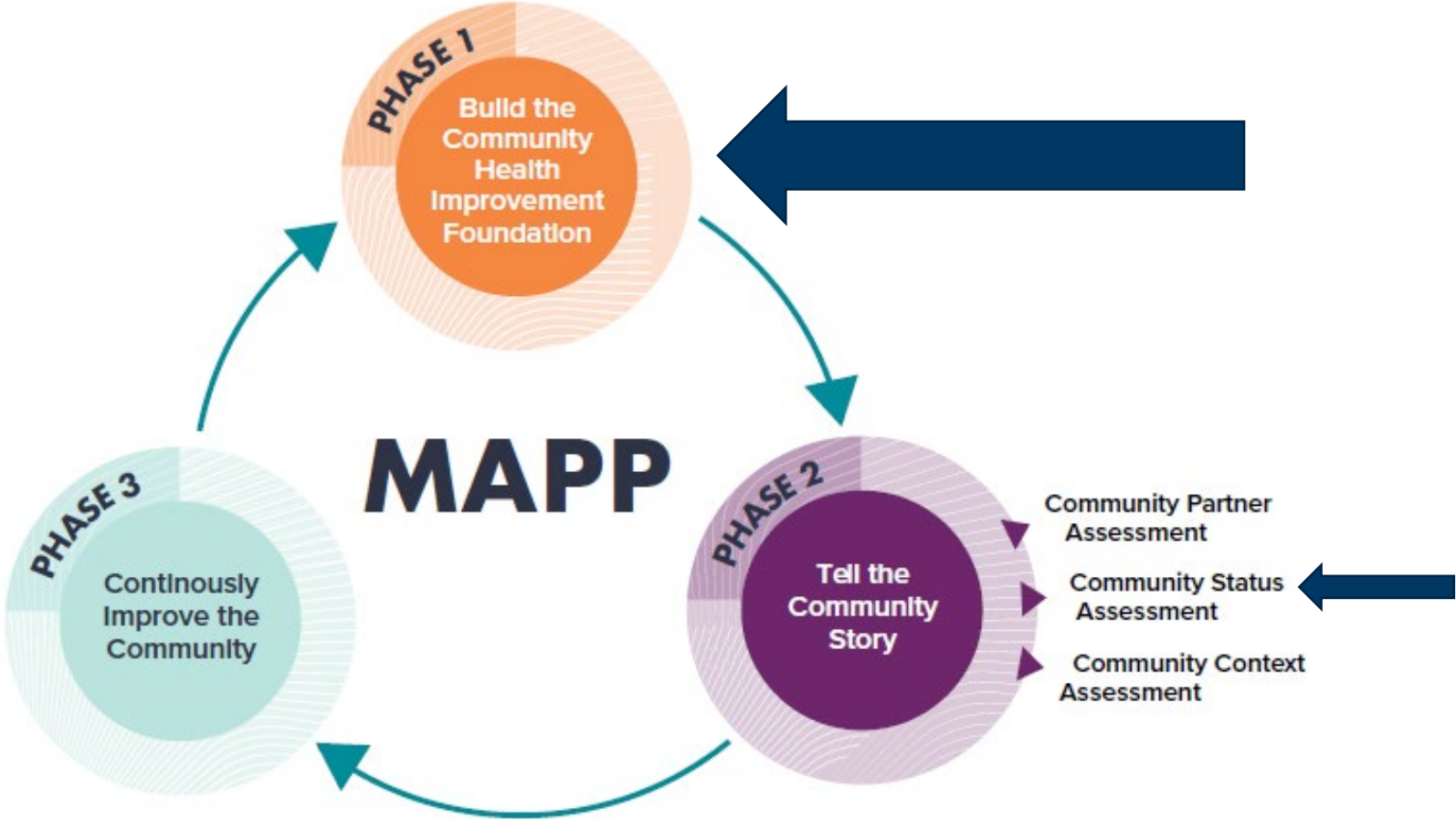
Discussion

What was done well?

What is missing?

What do we still need to work towards?

MAPP Framework: CHA Check-In



Next Steps

- Continue recruiting and reaching out to people who would like to participate
 - Review who participated last time
- Confirm timeline for project completion
 - Updates on external support opportunities
- Next Meeting:
 - Defining the Community and Developing Mission and Value Statements
 - Data Indicators Workbook Updates