

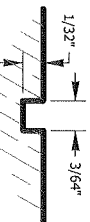
TYPE 1

TOP VIEW

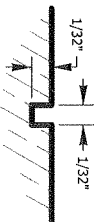
BRASS DISC



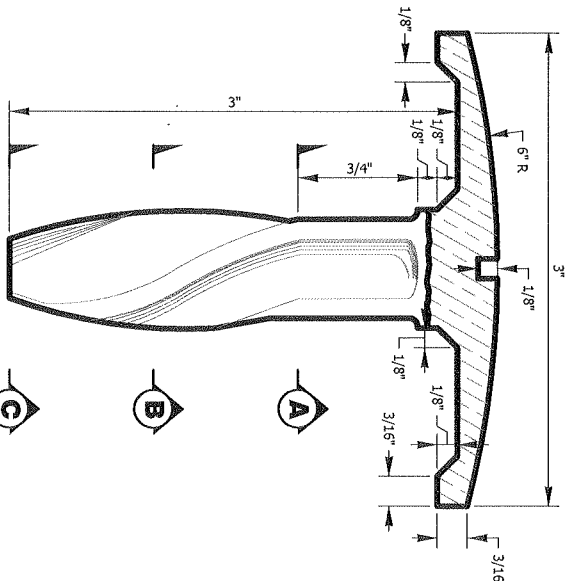
TYPE 2



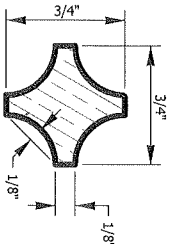
SECTION OF GROOVE FOR 1/4" LETTERS



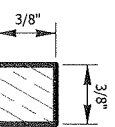
SECTION OF GROOVE FOR 3/16" LETTERS



SIDE VIEW



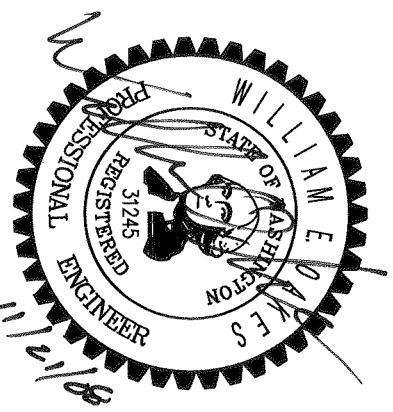
SECTION B



SECTION C

NOTES:

1. The Brass Disc will be furnished by P.L.S.
2. The text in the shaded area (see TOP VIEW) shall be 3/16" high and will be stamped by P.L.S. prior to setting the cap. Only the assigned identification letters and numbers are to be placed on the Brass Disc.
3. To replace a Public Land Survey System (PLSS) corners, consult a licensed Professional Land Surveyor (PLS).
4. All new survey monuments shall be installed per Island County Standard Plan IC-A-10.30-00



SURVEY MONUMENTS TYPE 1 AND TYPE 2

ISLAND COUNTY STANDARD PLAN
IC-A-10.20-00

Office of the
ISLAND COUNTY ENGINEER
1 NE 6th Street
Capeville, WA 98228-5000