



Island County

Serving the communities of Camano & Whidbey Islands

Subscribe to updates from Island County, Washington

Email Address e.g.

name@example.com

[Subscribe](#)

Share Bulletin



Island County Natural Resources Newsletter June 2025

Island County, Washington sent this bulletin at 06/03/2025 12:51 PM PDT

[Having trouble reading this email? View it in your browser](#)



Natural Resources Newsletter

June 2025

Announcements



Island County Conservation Futures Fund Program

In late May, the Island County Board of County Commissioners approved two acquisition and two maintenance and operations project applications for the 2025 Conservation Futures Funding Cycle. The CFF Citizens Advisory Board reviewed, evaluated, and provided recommendations for all four projects.

For more information, [please click this link](#).



Double Bluff Preserve Acquisition: Recipient Whidbey Camano Land Trust

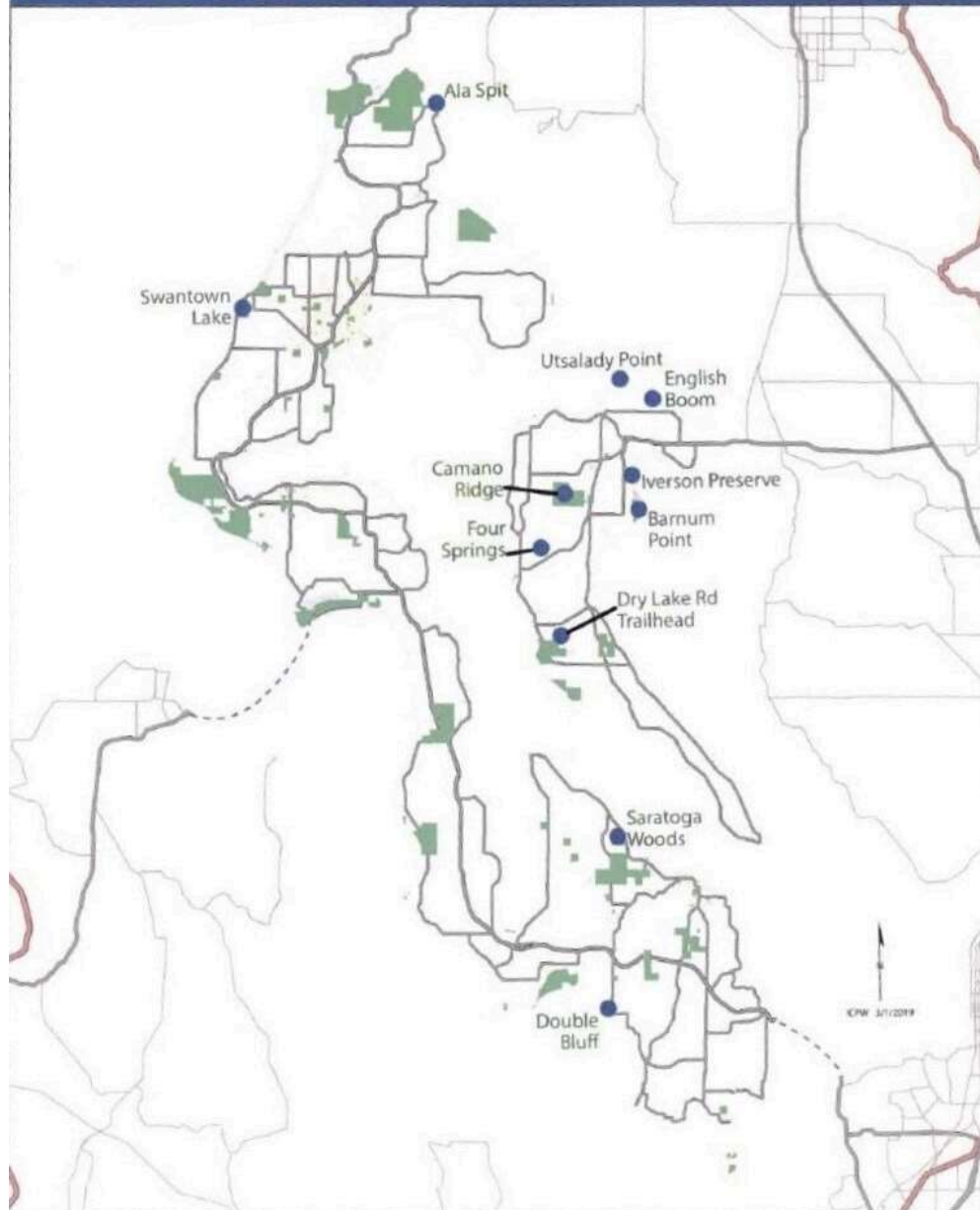
The Land Trust will conserve 257 acres of exceptional coastal forest, lake, wetland, marine feeder bluff, and shoreline habitat located on south Whidbey Island. The funds will assist with leveraging substantial matching funds to permanently protect and purchase the Project as one of the top conservation priorities in Island County encompassing 3500 feet of shoreline and 42 acres of nearshore marine habitat, 7 acres of coastal tidelines and 35 acres of bluffs and beach, as well as 137 acres of coastal upland forest and approximately 78 acres of wetland and a 15 acre undeveloped lake and associated stream that is a tributary to Island County's Deer Lagoon.



Holmes Harbor Community Forest Acquisition: Recipient Whidbey Camano Land Trust

The Land Trust will conserve 40 acres of forest habitat as Phase 2 of the Holmes Harbor Community Forest. This project will provide a critical trailhead and parking area for future public access into the Community Forest. The Community Forest presents an exciting opportunity for a trail system on South Whidbey in addition to substantial climate resilience, wildlife habitat, and ecosystem benefits, and exhibits a commitment to providing open and equitable access to the Community Forest.

Island County Parks - CFF
Island County Public Works

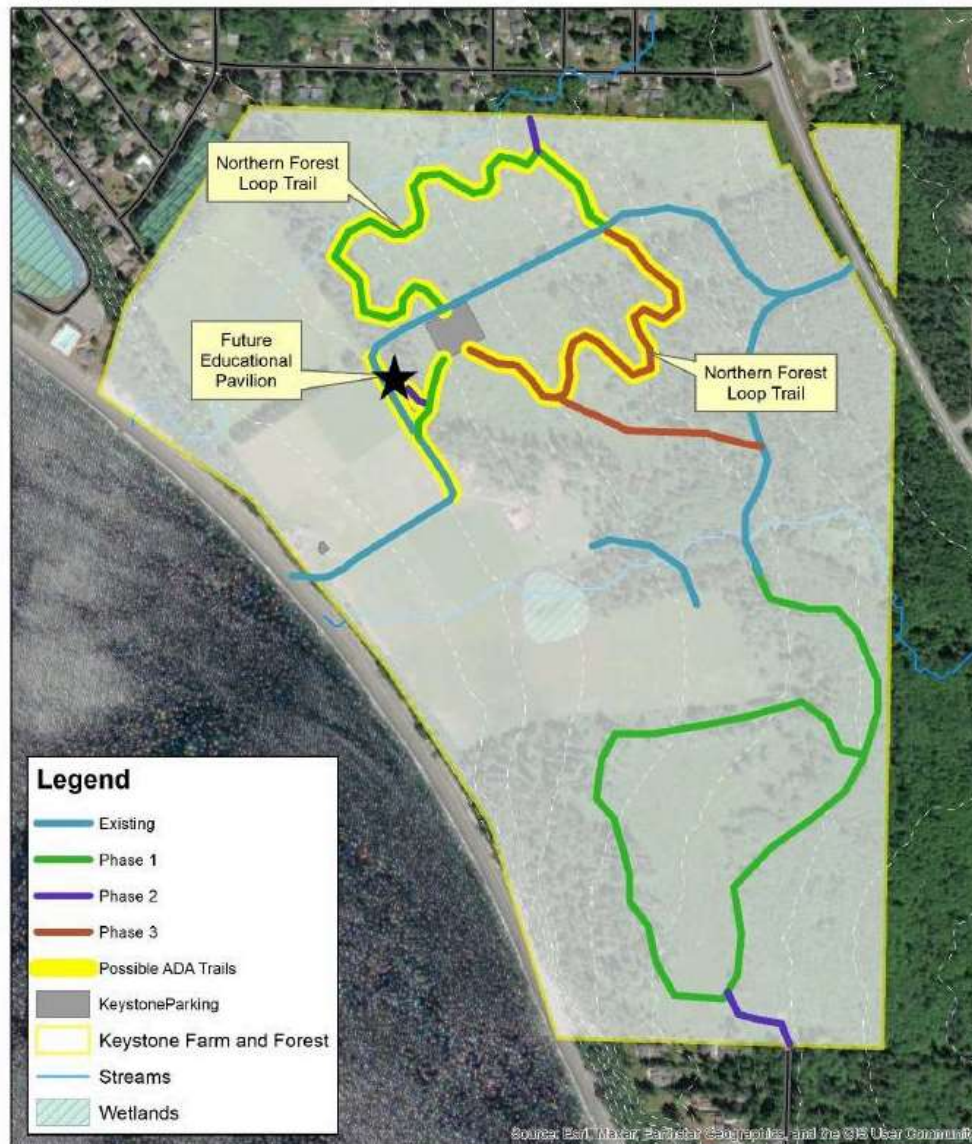


CFF funded Island County Parks Maintenance & Operations: Recipient Island County Parks Department

The Parks Department will use the funds to maintain and operate the CFF parks while enhancing the public's access and experience through projects addressing hard and softscapes, park maintenance equipment, renovations and upgrades, removal of invasive species, habitat restoration, improving ADA access, and continuing partnerships with volunteers and programs.



Keystone Preserve Future ADA Trails and Educational Pavilion Map



Keystone Preserve ADA Trail: Recipient Whidbey Camano Land Trust

The Keystone Preserve ADA Trail Construction Project will create 0.8 miles of wheelchair accessible trail at the Keystone Farm and Forest Preserve. The goal of the project is to create an inclusive outdoor experience for the community by providing access to our

natural spaces for all people, including people with disabilities. The two trails will connect the parking area to the driveway that is flat and level, providing expansive views of the Puget Sound and Olympic Mountains, and will connect to the future education pavilion. All trail specifications for accessibility standards will be followed, including trail grade, surfacing, width, obstacle height, and cross slope. The Land Trust intends to use local contractors to the extent possible, with the goal of construction in the summer of 2025; however, depending on contractor schedules work may fall into 2026.

Programmatic Updates

Salmon Recovery Technical & Citizen's Committee (SRTCC)

The Salmon Recovery Technical & Citizen's Committee meets on the third Wednesday of each month. Please contact our new lead entity Jessica Reed if you are interested in joining this committee. .

The SRTCC prioritizes and supports salmon recovery projects, provides technical assistance, revises the Salmon Recovery Plan, and ensures projects align with community goals. They act as a hub for salmon-related efforts, secure funding, promote scientific research, and educate the public on ecosystem processes vital to salmon recovery.

Use [this link for more information](#).



Learn + Act

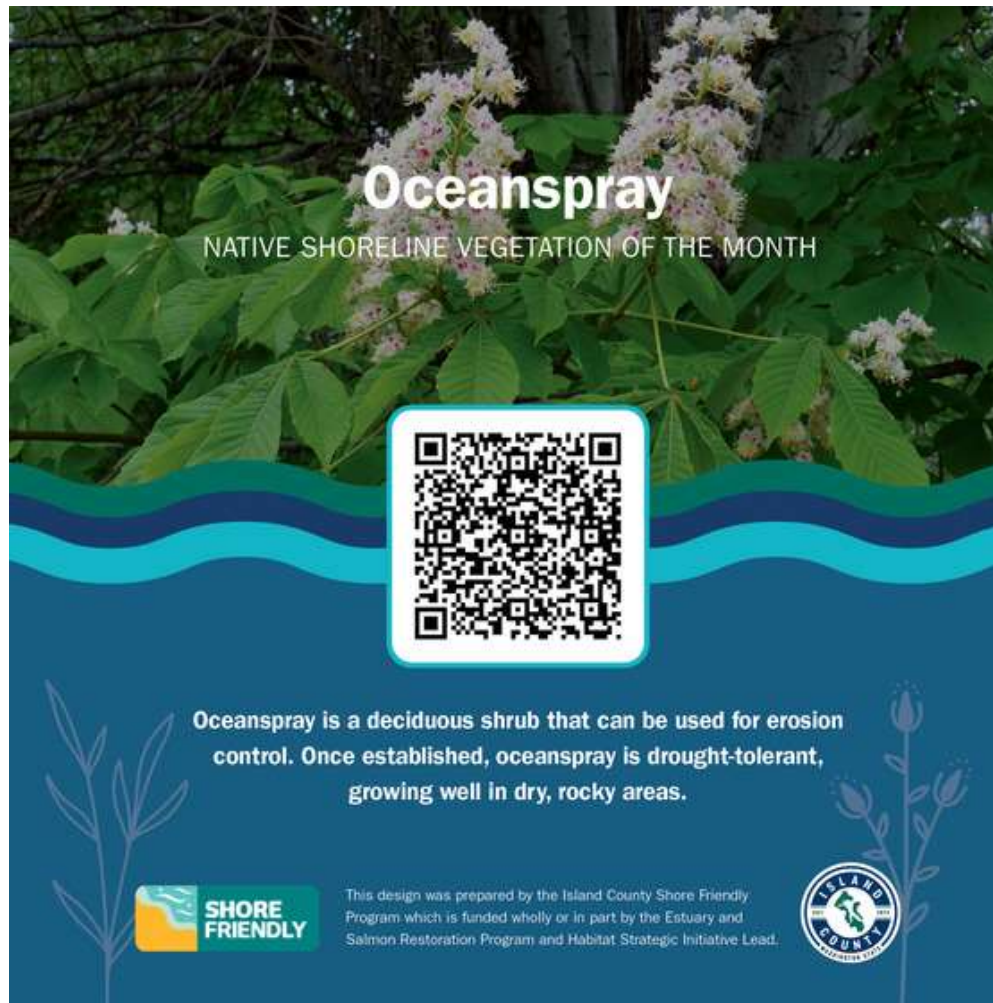
Shoreline Trivia



Shore Friendly Plant of the Month

Oceanspray is a deciduous shrub that can be used for erosion control.

Do you have questions about your shoreline property? [Request a visit.](#)



Thank you for your interest in Island County Natural Resources.

For more information, contact Jen Schmitz: J.Schmitz@islandcountywa.gov or 360-914-0841.

Stay connected with our Facebook page!

Stay Connected with Island County, Washington:

SUBSCRIBER SERVICES:

[Manage Subscriptions](#) | [Unsubscribe All](#) | [Help](#)

Powered by



[Privacy Policy](#) | [Cookie Statement](#) | [Help](#)